



## Message from the Headteacher

Welcome back! I hope you all had a great time with your children and that they are feeling well-rested and ready for the term ahead.

We began the week by celebrating those pupils who received the Headteacher's Award for Spring 2. It was a pleasure to recognise their efforts and achievements. I also spoke to the children about the importance of working hard, always doing their best, showing kindness to one another, and making the most of every single day.

Thank you to those parents who attended the Edale and MTC information evening. We hope you found it useful and that the children are feeling excited about the upcoming residential experience. The PowerPoint is now available to view on the Y4 section of our website.

It has been a very positive start to the term. I have had the opportunity to visit classes and see how well the children have settled back into school life. They have returned focused and ready to learn, and it has been particularly pleasing to see our whole-school focus on collaboration already shining through across the school.

Our phase assemblies this week also focused on our Language of the Half Term, led by Mrs Pickles and Miss Horsefield, alongside some of our pupils. The children learned about the history and culture linked to the language and were introduced to some Greek phrases.

Many of you may have already noticed that the mural above the climbing wall was completed over the two-week break. I will be sending a separate letter with photographs of the work that has been carried out next week. The funding for these projects has come from the PTA, so thank you once again for all your contributions over the last two years. As you can see, this support goes a long way in helping to make the school a special place for the children.

## Key Dates

|                   |                                               |
|-------------------|-----------------------------------------------|
| 21st April        | Y4 Squash Taster Session                      |
| 22nd April        | Robinwood Info Evening for Y5 Parents, 5.30pm |
| 23rd & 24th April | Y3 SEND Reviews                               |
| 24th April        | Eco Ambassadors Bake Sale                     |
| 25th April        | Cross Country Relays - Longley park           |
| 25th April        | Orienteering - Parkwood Springs               |
| 28th April        | Y3 Botanical Gardens                          |
| 1st May           | Please Note: Art Club Cancelled               |
| 1st May           | Y5 Dodgeball - S10 School Sport               |
| 5th - 8th May     | Y4 Edale Residential                          |
| 1st May           | Y5 Dodgeball - S10 School Sport               |
| 5th - 8th May     | Y4 Edale Residential                          |
| 11-15th May       | Y6 SATS Week                                  |
| 14th May          | Y5 KES Science Visit                          |
| 15th May          | Y6 SEND Reviews                               |
| 16th May          | Orienteering - Graves Park                    |
| 18th May          | Y3 Open Classrooms                            |
| 18th May          | Y3 - Y5 Assessments                           |
| 18th May          | Extended Support Plan/EHCP Reviews            |

## This Week's Awards



|      |          |
|------|----------|
| Y3NH | Lydia    |
| Y3MC | Alicia   |
| Y3WN | Feifei   |
| Y4TH | Sofia    |
| Y4HH | Barney   |
| Y4JE | Edahi    |
| Y5BB | Rose     |
| Y5KB | Alyson   |
| Y5KL | Hannah R |
| Y6PK | Daniel   |
| Y6OS | Toby     |
| Y6JC | Seth     |
| IR   |          |

### House Points

|           |     |
|-----------|-----|
| Steel     | 369 |
| Cutlers   | 323 |
| Originals | 358 |
| Peaks     | 345 |

### Headteacher's Award

Well done to the children who earned their Headteacher's Award this week.

Hasnain, Heath, Loralie, Louis, Laurie, Bobby, Jossy, Rowan, Indy, Robyn, Eric, Shelby, Jacob



### Focus Value - Behaviour & Attitudes

Our pupils will be encouraged to:

- Understand and embrace fundamental world values
- Be happy, friendly and caring
- Embrace difference and diversity
- Listen and respect other's thoughts, feelings and opinions
- Be respectful, tolerant and caring
- Be humble

## Lunch Menu - w/b 20th April

NETHER GREEN JUNIOR SCHOOL

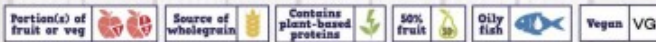
E A T S M A R T

### Spring/Summer Menu Week 2

30<sup>th</sup> Mar, 20<sup>th</sup> Apr, 11<sup>th</sup> May, 1<sup>st</sup> Jun, 22<sup>nd</sup> Jun, 13<sup>th</sup> Jul, 14<sup>th</sup> Sept, 5<sup>th</sup> Oct, 26<sup>th</sup> Oct 2026

| WEEK TWO                     | FAVOURITES MONDAY                                          | WORLD TUESDAY                                              | ROAST WEDNESDAY                                            | PLANET PIZZA THURSDAY                                                                       | FISH FRIDAY                                                |
|------------------------------|------------------------------------------------------------|------------------------------------------------------------|------------------------------------------------------------|---------------------------------------------------------------------------------------------|------------------------------------------------------------|
| <b>Main Meal</b>             | Sausage & Mash with Gravy                                  | Beef Lasagne with Nachos                                   | All Day Breakfast                                          | Rainbow Vegetable Pizza with Tomato Pasta                                                   | Battered Pollock & Chips                                   |
| <b>Vegetarian Option</b>     | Veggie Sausage & Mash with Gravy <sup>VG</sup>             | Plant-based Lasagne with Nachos                            | Vegetarian All Day Breakfast                               | Spaghetti with Plant-based Meatballs in an Arrabbiata Sauce <sup>VG</sup> with Garlic Bread | Cheese & Onion Roll with Chips                             |
| <b>'Street' Food</b>         |                                                            | Vegetable Jollof Rice                                      |                                                            | Cheese & Spring Onion Loaded Potato Skins                                                   |                                                            |
| <b>Vegetables</b>            | Broccoli, Sweetcorn & Baked Beans                          | Broccoli, Cauliflower & Carrots                            | Seasonal Greens & Carrots                                  | Garden Peas & Sliced Carrots                                                                | Garden Peas & Baked Beans                                  |
| <b>Baked Jacket Potatoes</b> | Jacket Potato with Beans <sup>VG</sup> Tuna Mayo or Cheese | Jacket Potato with Beans <sup>VG</sup> Tuna Mayo or Cheese | Jacket Potato with Beans <sup>VG</sup> Tuna Mayo or Cheese | Jacket Potato with Beans <sup>VG</sup> Tuna Mayo or Cheese                                  | Jacket Potato with Beans <sup>VG</sup> Tuna Mayo or Cheese |
| <b>Dessert</b>               | Cornflake Tart & Fruit Slice                               | Lemon Drizzle Cake                                         | Blueberry Cake & Custard                                   | Fruit Slices & Pancakes                                                                     | Chocolate Crispy Bun                                       |

Available Daily: Pick & Mix Selection, Salad, Fresh Bread, Fresh Fruit & Yoghurt



England's target for 'free sugar' intake for your child  
Recommended fruit and vegetable portion sizes are calculated using School Food Standards.  
On average our desserts do not exceed a third of a child's recommended 'free sugar' intake.

## Bake Sale For Wildlife-Friendly Plants

A group of children in Y5 and Y3 and Eco Ambassadors are arranging a bake sale to raise funds for wildlife-friendly plants and help insects and animals in the school grounds.

Cakes and biscuits will be on sale under the shelter in the small yard on **Friday 24<sup>th</sup> April, straight after school**, and will be priced around £1.

Please come down to buy a treat and support local wildlife. Thank you in advance for your support.



## Lion Cub for Sheffield Children's Hospital

Following on from our previous Newsletter, we are delighted to share some more photos of our Pride of Yorkshire Lion Cub, Jigpaw. Arts Council and Arts Club pupils worked with Mrs Coats to design and paint this fantastic sculpture, which celebrates how we belong together and is inspired by our four school houses (Cutlers, Originals, Steel and Peaks). As you can see, the bear is decorated with colourful jigsaw pieces, symbolising how everyone in our community comes together as one school. Please do keep an eye out for Jigpaw on the Pride of Yorkshire trail this summer!





Please find attached information about the free support courses and groups offered to parents of children with SEND. No formal diagnosis is required to access these services.



CONNECT INFORM EMPOWER

## What's on Guide

### April

#### Introduction to Autism

Date - Saturday 18<sup>th</sup> April 2026  
Time - 10.00am - 12.00pm

Location - Mencap Gateway, Sheffield, S2 3QF

#### Anxiety

Date 16<sup>th</sup> April 2026  
Time 10.00am - 12.30 pm

Location - Sharrow Community forum, S7 1DB

#### Preparation for Adulthood

Date 24<sup>th</sup> April 2026  
Time 10.00am - 12.30pm

Location First start, Sheffield, S8 6HH

### May

#### Speak Up

Date 6<sup>th</sup> May 2026  
Time 10.00am - 12.30pm

Location - Burton Street Foundation, Sheffield S6 2HH

#### Understanding Sensory Needs

Date - 22<sup>nd</sup> May 2026  
Time - 10.00 am - 12.30pm

Location - First start, Sheffield S8 6HH

#### Eating

Date 14<sup>th</sup> May 2026  
Time 10.00am - 12.30pm

Location Sharrow Community Forum, S7 1DB

### June

#### Introduction to Demand Avoidant Behaviour

Date 3<sup>rd</sup> June 2026

Time 10.00am - 12.30pm

Location Sharrow Community Forum, S7 1DB

#### Sensory Toolkit - Ryegate,

Date 10<sup>th</sup> June 2026

Time 10.00 - 12.30pm

Location Ryegate, Tupton Crescent Road, Sheffield, S10 8DP

#### Trauma Informed

Date Saturday 27<sup>th</sup> 2026

Time 10.00 - 12.00pm

Location - Mencap Gateway, Sheffield, S2 3QF

[www.sheffieldparentcarerforum.org.uk](http://www.sheffieldparentcarerforum.org.uk)



CONNECT INFORM EMPOWER

## What's on Guide

### July

#### Preparation for Adulthood

Date 8<sup>th</sup> July 2026

Time 10.00am - 12.30 pm

Location - Burton Street Foundation, Sheffield S6 2HH

#### Anxiety

Date 17<sup>th</sup> July 2026

Time 10.00am - 12.30 pm

Location - First start, Sheffield S8 6HH



[Events | Sheffield Parent Carer Forum](http://www.sheffieldparentcarerforum.org.uk)

[www.sheffieldparentcarerforum.org.uk](http://www.sheffieldparentcarerforum.org.uk)





## WHAT'S ON – SEND PARENT & CARER SUPPORT GROUPS

### TALK & CHALK Dads & Male Carers Group

A relaxed, informal drop-in evening for dads and male carers supporting a child or young person with SEND.

Enjoy a coffee, a game of snooker, or just good conversation.

Stephen Harrison Snooker Club, Leeds Road, Sheffield, S9 3TY

3rd Wednesday of each month

Evening session 6.30pm - 9.30 pm

Dates: 15 Apr | 20 May | 17 Jun | 15 Jul | 19 Aug | 16 Sept

### HOPE FOR SEND – Coffee & Support Group

A friendly and welcoming group for parents and carers of children with SEND needs. Enjoy tea or coffee, connect with others, and take some time for yourself in a relaxed space.

High Green Development Trust (HGDT) The Campus, Pack Horse Ln, High Green, Sheffield S35 3HY

Mondays (term time only)

1:00pm – 2:30pm

Upcoming Dates: 13 Apr | 20 Apr | 27 Apr | 11 May | 18 May

### DISABLED PARENT/CARERS GROUP

For parents and carers who identify as having a disability (no diagnosis required) A safe, supportive space to connect with others.

Highfield Adventure Playground, Crowther Place, Sheffield, S7 1BJ

2nd Friday of each month

10:00am – 12:00pm

Dates: 10 Apr | 8 May | 12 Jun | 10 Jul | 14 Aug



# FRIDAY FUN

for Families

School Age Children

4:00 - 5:15PM

Games

Friday 17 April



Awesome Art!

Friday 24 April

Try something new

Lego

Friday 1 May

Awesome Art!

Friday 8 May



Lego/Games

Friday 15 May

Surprise!

Friday 22 May

Donation £3.00 per child requested to  
Broomhill Community Trust

Tel: (0114) 273 4276

Email: [activities@broomhill-library.org.uk](mailto:activities@broomhill-library.org.uk)

Website: [broomhill-library.org.uk](http://broomhill-library.org.uk)

Facebook: [.com/bclsheffield](https://www.facebook.com/bclsheffield)



Choose what you enjoy





## **Complimentary Ticket Offer for Students to a Sheffield Hatters Game this Saturday!**

**Date:** Saturday 18th April 2026

**Time:** 7PM

**Venue:** Canon Medical Arena, Sheffield

**Matchup:** Sheffield Hatters v Leicester Riders



**Special Offer:**

<https://app.fanbaseclub.com/Fan/Tickets/SelectType?fixtureId=13536>

**Code:** SCHOOLS

**How to Claim:**

**Visit:** [Sheffield Hatters Tickets](#)

**Enter the promo codes at checkout.**



---

**£10 OFF ADULT TICKETS &  
£5 FOR ALL JUNIOR TICKETS**

---



SAT 2ND MAY - 7:30PM FCP - CANON MEDICAL ARENA

---

**ADULTS £15  
JUNIORS £5**  
**USE PROMO CODE **RN26P4WZ****  
**AT [TICKETS.RHINOSNETBALL.CO.UK](https://tickets.rhinosnetball.co.uk)**

PROMO CODE EXPIRES 11:59PM THE DAY BEFORE THE MATCH  
TO BUY OVER THE PHONE CALL 0371 423 1315.  
PHONE LINES OPEN BETWEEN 10AM - 4PM, MON-FRI EXCLUDING BANK HOLIDAYS.

