

Welcome to

NETHER GREEN JUNIOR

SCHOOL



Vision

Nether Green Junior School provides a safe, stimulating and inclusive environment for learning that enables the best possible social, academic and cultural development for our children. It is a happy, vibrant and productive workplace for children and staff alike where children take part in a rich variety of experiences that enhance and support academic learning.

We work hard to forge positive and enduring partnerships with parents/carers and the local and wider community.

WELCOME AND INTRODUCTIONS

Over 60 members of staff

Some members of the school team:

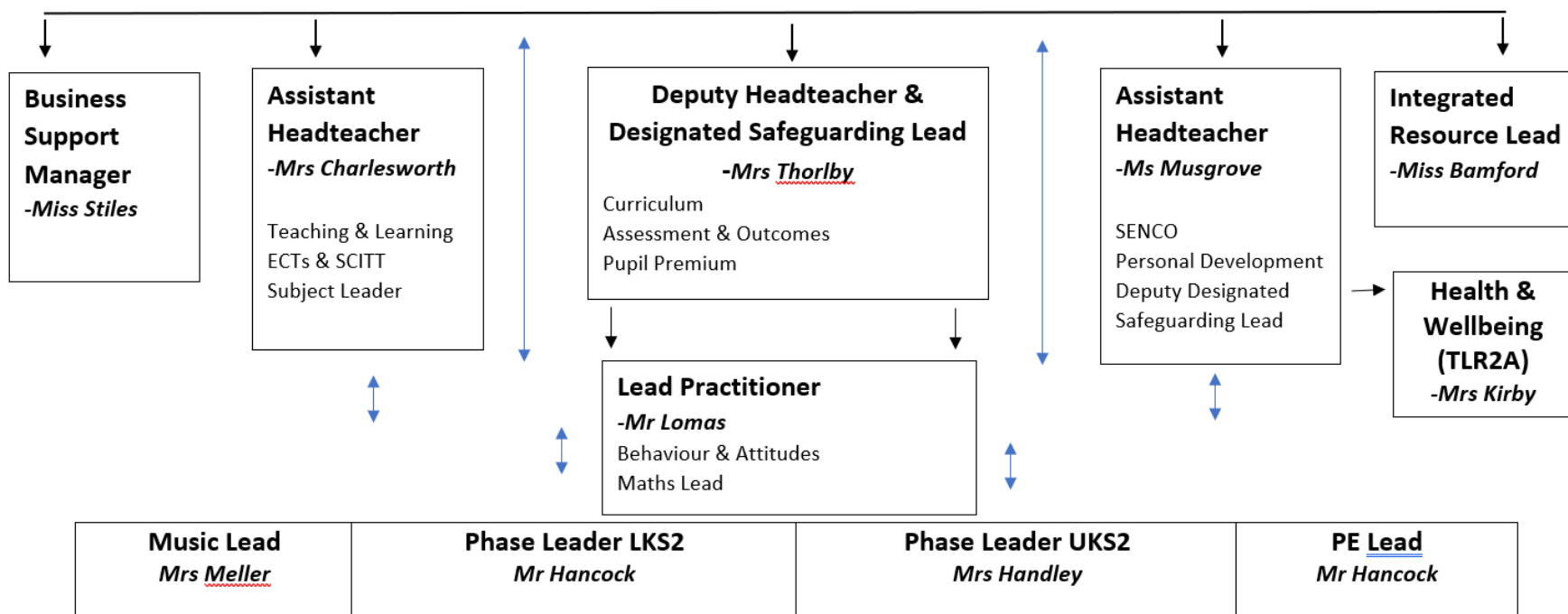
- ▶ Mr Hancock – Y3 & 4 Phase Leader
- ▶ Mrs Thorlby – Deputy Headteacher
- ▶ Ms Musgrove – Assistant Headteacher (SENDCo)
- ▶ Mrs Charlesworth – Assistant Headteacher
- ▶ Mr Lomas (Behaviour & Attitudes)
- ▶ Miss Bamford – IR Lead
- ▶ Mrs Bedford – Learning Mentor
- ▶ School governors

Of course you will get to know many more!



Leadership Structure

Headteacher
-Mr Allen
 Leadership & Management
 Deputy Designated Safeguarding Lead



ABOUT NETHER GREEN JUNIOR SCHOOL



- Be happy and safe. Have fun and learn.
- Junior School of 379 pupils
- Diverse community
- Organisation year group
- Integrated Resource
- Breakfast & After School club
- PTA
- Community – Pupils/teachers/
Parents/carers/governors/support/local business
Staff/After school club



JUNIOR SCHOOL EXPECTATIONS

- Transition – working in partnership & bringing the two feeder schools together
- Moving from an Infant to a Junior School
- Stepping stone to secondary school
- ‘Secondary ready’ by the end of year 6
- Happy, kind, respectful and responsible young citizens
- Developing independence
- KS2 Curriculum

NETHER GREEN JUNIOR SCHOOL VISION & VALUES

Values

Our values are at the core of everything we do and have been developed with the aim of preparing our pupils to be confident, happy and compassionate citizens.



Effort & Resilience



Independence



Pride



Behaviour & Attitudes



Teamwork



Respect



- **Reward system, Celebration Assembly & Houses**
- **Direction & Priorities**

CURRICULUM – OUR APPROACH TO LEARNING

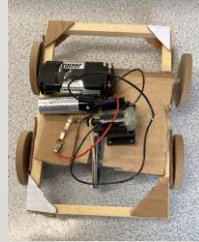
Curriculum Threads

At Nether Green junior School we have 3 core 'threads' that underpin our curriculum delivery and the experience for children at our school. These threads are considered in every aspect of planning the curriculum.

Click on the sections below to find out more or click [here](#) to download a pdf.



BROAD, BALANCED & VALUED CURRICULUM



Y3 CRESSWELL CRAGS



Y4 GREEK DAY



YEAR 5 VIKING DAY



Y6 RESIDENTIAL – ROBINWOOD



INCLUSION & PASTORAL SUPPORT AT NETHER GREEN JUNIOR SCHOOL

- SENDCo, Ms Musgrove
- Learning Mentor, Mrs Bedford
- Level 3 SEMH TA, Mr Wright
- Level 3 EAL TA, Miss Keeley
- Trauma Informed School
- Bespoke Child Centred Approach – personalised provision
- Graduated Approach – Assess, Plan, Do, Review
- Additional opportunities - Trips

INTEGRATED RESOURCE

- IR Lead & SENCO, Miss Bamford
- 16 place unit – through the LA
- 6 Teaching Assistants with 2 HLTAs
- Split across two classrooms – two different pathways leading into mainstream
- Every child has a link to a mainstream class
- Primary Area of Need - Communication & Interaction
- Secondary Area of Need - Cognition & Learning

WHAT WE OFFER AT NETHER GREEN JUNIOR SCHOOL

- Music & Performing Arts – Choir, Orchestra, Dance group, Year group performances



WHAT WE OFFER AT NETHER GREEN JUNIOR SCHOOL



- Sport – after school clubs, intra and inter school competitions
- Events – Cross-country, Orienteering, Winter Festival, Summer Festival, PTA



EXTRA-CURRICULAR OFFER

Y3-6 EXTRA CURRICULAR CLUBS AUTUMN TERM 2024/25 – Nether Green Junior School

		Monday	Tuesday	Wednesday	Thursday	Friday
FIRST HALF TERM – SEP/OCT	LUNCH	Girls Football Y5	ORCHESTRA (Instrumentalists only)	Tennis Club AJW Coaching Y3 – 4		Badminton Club AJW Coaching Y5 – 6
		CHOIR	Dance Club Y3 – 6	Samba Band Club Y4 - 6		Guitar Band
	AFTER SCHOOL	Gymnastics Club Sheffield Gymnastics Club Y4 – 6 (3.45 – 4.45pm) Sports Hall	NGJS Cross Country Club Y3 – Y6 (3.40 – 4.15pm)	Karate Club Elite Karate Y3 – 6 (3.45 – 4.45pm) Sports Hall	Basketball Sheffield Hatters Y5 – 6 (3.45 – 4.45pm) Sports Hall	
		Boys Football Y6 (3.40 – 4.30pm)	Forest School Y5 – 6 Fit Kids (3.35 – 5.05pm) Garden			
		Football Club Y3 – 6 SoccerEds (3.45 – 4.45pm) Sports Hall	Forest School Y3 – 4 Fit Kids Sheffield (3.35 – 5.05pm) Garden	Girls Football Y3/4 (3.40 – 4.30pm)		
		French Club Y3 – 6 Le Club Français (3.45 – 4.45pm) Green Rm				

SECOND HALF TERM – NOV/DEC	LUNCH	Boys Football Y5 – 6	ORCHESTRA (Instrumentalists only)	Tennis Club AJW Coaching Y3 – 4		Badminton Club AJW Coaching Y5 – 6
		CHOIR	Dance Club Y3 – 6	Samba Band Club Y4 - 6		Guitar Band
	AFTER SCHOOL	Gymnastics Club Sheffield Gymnastics Club Y4 – 6 (3.45 – 4.45pm)	NGJS Cross Country Club Y3 – Y6 (3.40 – 4.15pm)	Karate Club Elite Karate Y3 – 6 (3.45 – 4.45pm)	Basketball Sheffield Hatters Y3 – 4 (3.45 – 4.45pm)	
		Girls Football Y5 – 6 (3.40 – 4.15pm)	Forest School Y5 – 6 Fit Kids (3.35 – 5.05pm)			
		Football Club Y3 – 6 SoccerEds (3.45 – 4.45pm)	Forest School Fit Kids Y3 – 4 (3.35 – 5.05pm)	Boys Football Y3/4 (3.40 – 4.30pm)		
		French Club Y3 – 6 Le Club Français (3.45 – 4.45pm)				

- The clubs highlighted in red are run by teaching staff free of charge.
 - These clubs are promoted during assembly and the children will either sign-up with their class teacher or take a letter home for parent/carer consent.
 - All other clubs are run by external providers for which there is a charge.
- For more information about your child joining one of the extra-curricular clubs run by an external provider, please find contact details overleaf.

- School council, Sports Crew, Library monitors, Eco ambassadors, Arts Council

RESOURCES & FACILITIES



RESOURCES & FACILITIES



RESOURCES & FACILITIES

- Chromebooks
- Sports Hall
- Dining Hall
- Robots
- Stage / Sound System
- Library
- The Nest
- Sensory Room
- Outdoor Space – Plans moving forward



PARENTAL ENGAGEMENT

- Website
- Newsletter
- Open Classrooms
- Performances
- Coffee mornings
- Parents Evenings
- PTA meetings and events
- SEND Review meetings
- Workshops – Online safety, Maths, Reading, Y4 and Y6.



TRANSITION TO Y3

- Your child will have at least one visit to Nether Junior School in June/July.
- Your child's new Y3 teacher will visit the children in their current setting.
- Your child's new teacher will meet with their current Y2 class teacher to ensure important information is passed up.
- There will be an information sharing session for parents/carers in July to enable you to be familiar with the arrangements for September e.g. dinner money, completing emergency forms, where to bring them on day 1 etc.
- Buddy system.



**A guide
for parents**

**Entry into
Junior School 2025/26**

This booklet is for pupils
entering Y3 in September 2025
**You must apply by
15 January 2025**

**Save Time -
Apply online**
The Junior Admissions Team
can be contacted on
(0114) 273 5766 or by email at
ed-admissions@sheffield.gov.uk

This guidance applies to pupils living in Sheffield. If you live outside Sheffield you MUST apply through your own home council, even if your child attends a school in Sheffield and you wish to apply for a Junior school in Sheffield. If you live outside Sheffield and you apply on a Sheffield form (online or paper), we will discard your application.

Sheffield
City Council

- Find out more
- Remember applications due in by
15th January 2025

https://www.sheffield.gov.uk/sites/default/files/2024-09/entry_to_junior_school_2025_to_2026_-_a_guide_for_parents.pdf



- Further information can be found on our website
- Thank you
- Questions